



Asbestos Testing in Building Material Such as Fibre Cement

Operating under Envirolab Group, Envirolab Services and MPL Laboratories offer an asbestos testing service that allows you to determine the presence of asbestos in any suspected materials including fibre cement, corrugated fibre cement material and vinyl tiles. This service is open to commercial and residential customers.

If the sample material looks like a sprayed finish, particularly if it is insulating material on pipework, boilers or ceilings, do not sample yourself!

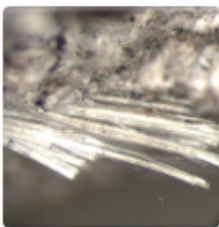


To directly enquire about asbestos testing contact:
Lulu Scott
Sydney Asbestos Section
Supervisor

Disturbing asbestos containing material is extremely dangerous where precaution should be taken before you attempt to collect a sample for testing. For this reason, asbestos sampling should be carried out by qualified individuals.

However, if you are collecting a sample yourself, the instructions below provide minimum precautions. If in doubt or for further information, we highly recommend that you contact us.

- Dampen or wet the material.
- Using pliers or any other available tool, place a baby-wipe to protect the inside edges of the tool - If the inside of the pliers are "ribbed" or textured, this precaution helps limit the possibility of parts of the sample getting stuck in these textured areas.
- Break off a thumbnail sized sample.
- Place the sample into a sealable polythene bag, such as a sandwich bag.
- Place the bagged sample inside another sealable bag.
- Attach a label to the bag identifying the sample type (ceiling tile, fire board, etc), your name and address.
- Seal area of the sampled material with duct tape, paint or diluted PVA glue solution to avoid fibre release.
- Clean any tools used with a wet paper towel or use a baby-wipe and place in a separate bag to the sampled material – Upon receipt, our team will organise the safe disposal of discarded tools used in the sample collection.



Chrysotile fibre bundle

Send your sample by courier or mail or alternatively, bring it to us at:

Envirolab Services 12 Ashley Chatswood NSW 2067 or
MPL Laboratories 16-18 Hayden Court Myaree WA 6154

With your sample, include your payment of \$110 including GST for one sample*
We accept Visa, MasterCard, direct deposit or cheque payments.
PLEASE MAKE CHEQUES PAYABLE TO ENVIROLAB SERVICES.

* Discount available for combining multiple samples in a test job.

For further information
call:
1300 424 344

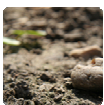
or visit:
envirolab.com.au

Results will be reported within 2 working days.

Ask us about the **fastest turnaround of 2-3 hours** for results. A surcharge applies for faster turnarounds.

You will be given a certificate that identifies whether asbestos is present and the type of asbestos present in the sample. In most cases, asbestos containing materials can safely be left in place, as there will be little or no risk of fibre release.

ENVIROLAB GROUP SPECIALISES IN



Soil

- Contaminated sites
- Waste



Water

- Ground
- Surface
- Drinking
- Trade waste
- Saline



Air

- Indoor
- Workplace
- Emissions
- Ambient
- Soil /Gas
- Dust /DPM



Asbestos

- Building
- Soil
- Brake pads



SPOCAS

- Acid Sulphate Soil
- AMD

Sydney

Envirolab Services
12 Ashley St
Chatswood NSW 2067
T 02 9910 6200
F 02 9910 6299
sydney@envirolab.com.au

Perth

MPL Laboratories
16-18 Hayden Court,
Myaree WA 6154
T 08 9317 2505
F 08 9317 4163
lab@mpl.com.au

Melbourne

Envirolab Services
1 Dalmore Drive
Scoresby VIC 3179
T 03 9763 2500
F 03 9763 2633
melbourne@envirolab.com.au

Adelaide

Envirolab Services
7 Palmerston Road
Windsor Gardens SA 5087
T 08 7087 6800
F 08 8362 1776
adelaide@envirolab.com.au

Brisbane

Envirolab Services
Unit 20a, 10-20 Depot St,
Banyo QLD 4014
T 07 3266 9532
F 07 3256 9411
brisbane@envirolab.com.au